

SUPRAScan

QUARTZ A1V

QUARTZ A1V HD

THE BEST SOLUTION FOR FRAGILE DOCUMENTS



i2S
be visionary

SupraScan Quartz A1V and Quartz A1V HD, scanners compliant with the ISO 19264 standard

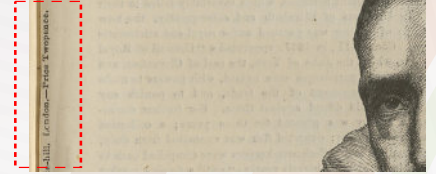


Backed by 17 years of experience, the SupraScan range kept on improving thanks to multiple innovations, enhancing technological performance and image quality over time.

The third generation of SupraScan range has been designed to satisfy the most demanding end-users, especially in terms of image quality. This search for excellence corresponds to i2S strategy and

endeavours. Image quality being at the core of i2S concerns, **SupraScan Quartz A1V and SupraScan Quartz A1V HD are compliant with ISO 19264 standard, Metamorfoze and FADGI image quality guidelines.**

The SupraScan Quartz A1V and Quartz A1V HD offer **a high flexibility**: the bookcradle fitted with **an angle opening from 95° to 120°** and a glass. Both have been developed for documents' **safety** and **receptiveness**. Either you **scan fragile documents opened at 95° to 120°** thanks to a dedicated book holder accessory and its adequate glass. Or you scan to normal glass plate to scan documents opened at 180° as usual.



Cameras are **designed and produced by i2S**; these are the result of many years of experience in digital imaging and processing.

The SupraScan Quartz A1V and Quartz A1V HD have been optimized and come today with the best solution with all in one: **image quality, productivity, configurable, easy to use and large.**

SupraScan range is driven by Yooscan software and can be easily connected to i2S **LIMB software suite**. It allows managing the entire digitization workflow thanks to **LIMB Maestro**, enriching images with **LIMB Processing**, and creating ready to publish images into **LIMB Gallery**, our digital library solution.

LIMB Software allows to manage your documents workflow in terms of image quality and efficiency.

At last, the SupraScan Quartz A1V and Quartz A1V HD fill your expectations and fit to your needs.



Some references - They trust our solutions



Advantages



Glass up



Glass down

IMAGE QUALITY

- compliant with **ISO 19264**, **Metamorfoze** and **FADGI**
- Quartz : MTF at 300 dpi: 100% resolution efficiency (about 5,9lp/mm)
MTF at 400 dpi: 85% resolution efficiency (about 6,7lp/mm)
- Quartz HD: MTF at 600 dpi: 100% resolution efficiency (about 11,8lp/mm)
MTF at 1000dpi: 90% resolution efficiency (about 18lp/mm)

LARGE

- scanning up to 900 x 630 mm (35,4' x 24,8' in) - Quartz A1V
- scanning up to 900 x 618 mm (35,4' x 24,3' in) - Quartz A1V HD

PRODUCTIVITY

- scan time <6 sec with Quartz A1V model at 300 dpi
- scan time < 16 sec with Quartz A1V HD model at 400 dpi

CONFIGURABLE

- **2 optional models of book cradle: 25 or 40 cm**
- Motorized with electronic commands (no air compressor) and has an A1 glass plate with automated pressure and controls on the book.
- The scan can be done without contact on the glass plate.
- The constant level of the document simplifies the daily use of the scanner by eliminating the need to setup the camera for each document.

LIGHTING

- **glare control: scan glossy papers even blister packed documents**
- relief details enhancement: **scan art works such as painting, drawings**
- no warm up
- **no UV, no IR**

ROBUST

- **no mechanical camera shutter**
- **smart autobalancing system**

EASY-TO-USE

- driven by Yooscan software
- **multiple saving frame with customize outputs**
- glass easily removable (1 person and 10 seconds)
- independant of ambiant light

SAFE

- glass stop if any obstacle
- non-dazzling LED lighting
- security sensors detect intrusions between the glass plate and the book cradle and release pressure or stop the glass plate move.

AUTOMATIC

- automatic calibration
- motorized book cradle and glass plate

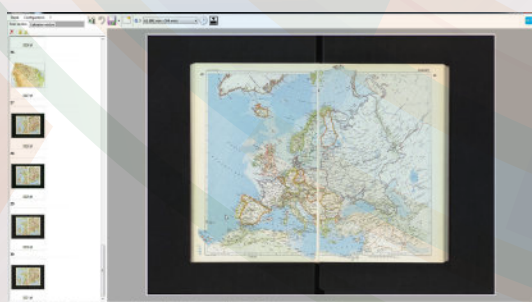
Software



LIMB Capture allows saving **simultaneously several formats with frames properties**. Frames properties include file formats, destination and image processing.

LIMB Capture manages **ICC profiles**, in order to get a perfect color management of our images. Calibration is very easy and fine tune settings are accessible.

Production environnement: login, metadata tagging, METS outputs and so on.

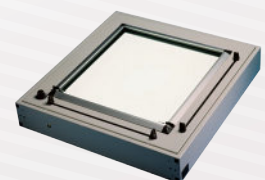


Modules



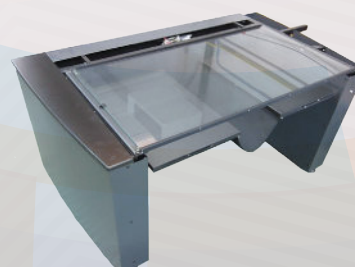
V-SHAPE CRADLE

to digitize at 90° for fragile bounded document up to 2x1 format.



LIGHT TABLE

to digitize transparent documents (glass plates, negatives or positives, etc.)



BOOK CRADLE

2 optional book cradle 25 or 40 cm

...AND THE VACCUUM TABLE

Technical Specifications



<u>Type</u>	A1+ planetary book scanner
<u>Camera</u>	Tri-linear sensor Automatic Focus (A1V HD)
<u>Optical resolution</u>	300 x 300 dpi on A1 format 600 x 600 dpi on A1 format (Quartz A1V HD model)
<u>Scan time</u>	6 sec at 300 dpi - A1V model 12 sec at 300 dpi - A1V HD model 8 sec 400 dpi - A1V model 16 sec 400 dpi - A1V HD model 24 sec at 600 dpi - A1V HD model
<u>File formats</u>	TIFF (multipage) , JPEG, JPEG2000, BMP, PDF (multipage), PNG, DNG
<u>Interface software</u>	Yooscan, operated by Windows 7, 8, 10 / 64 bits
<u>Accessories</u>	Motorized book cradle 25 or book cradle 40 Scanning area : Book cradle 25 or 40: up to 900 x 630 mm / 43.3 x 24.8 in. (open book) Quartz A1 V Book cradle 25 or 40: up to 900 x 618 mm / 43,3 x 24,3 in (open book) Quartz A1 V HD Document thickness : Book cradle 25 : up to 25 cm / 9.84 in. Book cradle 40 : up to 40 cm / 15.75 in. Document weight : Book cradle 25 : up to 25 kg / 55.12 lb. Book cradle 40 : up to 40 kg / 88.18 lb.
<u>Dimensions (L x l x h)</u>	Scanner : 1990 mm (78,3') x 1620 mm (63,7'') x 1840 mm (72')
<u>Weight</u>	Scanner : 225 kg (374,8 lbs) Book cradle 25: 165 kg (363,8') Book cradle 40: 280 kg (617,3)
<u>Power requirements</u>	100v – 240v , 50Hz 60Hz 300 VA max
<u>Warranty</u>	1 year on spare parts and software updates, extendable to up to 5 years
<u>Certifications</u>	CE / FCC part 15 conformity Low voltage electrical safety EN60950 radioelectrical disturbances EN55022, EN61000 -3-2, EN61000-3-3 electromagnetic immunity EN55024

The information on this brochure is subject to change without notice v2 Octobre 2017

About i2S

SOLUTIONS FOR YOUR DIGITIZATION PROJECTS

i2S is a company specialized in **image capturing and processing technology**.

We work for international clients, on a wide range of markets like: **health and well-being, sport, software, document digitization, food-processing and agriculture, aviation and aerospace, robotics and industrial control systems**, and more generally, wherever image capturing is required.

i2S creates and markets a whole range of scanners and software intended for **historical archives and bound documents digitization and promotion**. Most of our customers are content owners such as **museums, libraries, archives, administrations**

and a few large companies. Our clients value our innovative solutions which encompass the complete process of a digitization project: **capturing, processing, enriching and sharing**. In order to meet the need for digitizing varied and precious collections, we designed the largest range of book scanners on the marketplace – **from the smallest size to 2A0 format, including robot scanners**.

Today, more than **4.000 book scanners** are installed at more than **1.000 customers'** sites around the world.

At i2S we work with passion and dedication for our customers, taking up the challenge of putting innovation at the service of digitization projects efficiency.



3620 N. Josey Lane, Suite 103
Carrollton, TX 75007
(972) 492-0930 | sales@iiri.com

i2S Distributor for the
United States
www.iiri.com

